

COLECCIÓN TAIPEI

ESPECIFICACIONES TÉCNICAS / TECHNICAL SPECIFICATIONS / SPÉCIFICATIONS TECHNIQUES

Composición: / Composition: 100% PES. RECICLADO

Ancho / Width / Largeur: 140 cm. / 54 in

Peso / Weight / Poids: 420 gr/m² - 588 gr/ml



Resistencia a las costuras / Seam strength / Résistance des coutures

Urdimbre / Warp / Châine: 3,8 mm ISO 13935-2:2014

Trama / Weft / Trame: 4,4 mm ISO 13935-2:2014

Resistencia a la abrasión / Abrasion resistance / Résistance à l'abrasion:

Ciclos / Cycles / Cycles: > 25.000 ISO 13937-3:2000

Solidez de los colores a la luz 5 ISO 105-B02:2014

Solidez a la limpieza en seco 5 ISO 105-x12:2016

Solidez de los colores al lavado 5 ISO 105-x12:2016

Resistencia al pilling 4-5 ISO 12945-1:2000

Resistencia al pilling Pilling resistance / Résistance au pilling

INSTRUCCIONES DE LAVADO / WASHING INSTRUCTIONS / INSTRUCTIONS DE LAVAGE



Lavado a máquina, máximo a 30° C. con detergentes neutros.
Hard wash, maximum 30° C. with neutral detergents.
Lavage à la main, un maximum de 30° C. avec un détergent neutre.



Planchar por la cara posterior, máx., 110°.
Iron only the rear side, at a maximum of 110°.
Repasser par la face de derrière, 110° au maximum.



Puede lavarse en seco.
It can be dry cleaned.
Il peut être nettoyé à sec.



Evitar secar al sol.
Avoid drying in the sun.
Eviter sécher au soleil.



No usar lejía.
Do not use bleach.
Ne pas utiliser eau de Javel.

f FROCA
www.froca.com



Taipei

FROCA



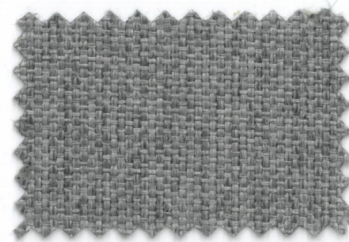
Taipei



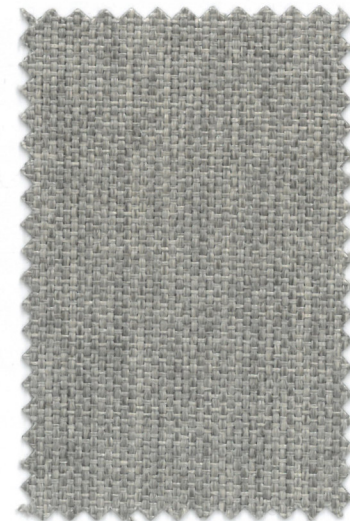
Taipei



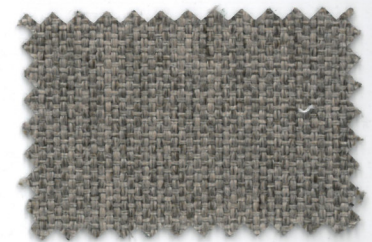
TAIPEI 1



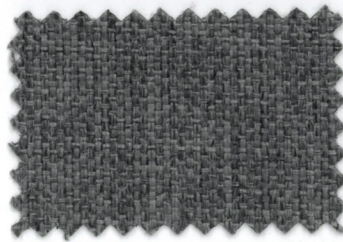
TAIPEI 3



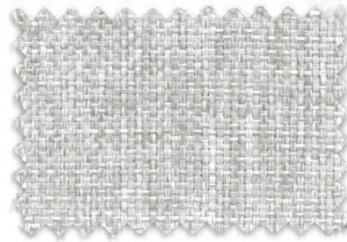
TAIPEI 5



TAIPEI 6



TAIPEI 2



TAIPEI 4



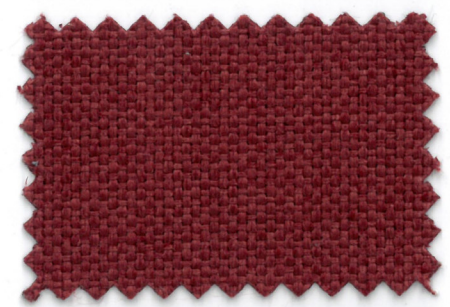
TAIPEI 8



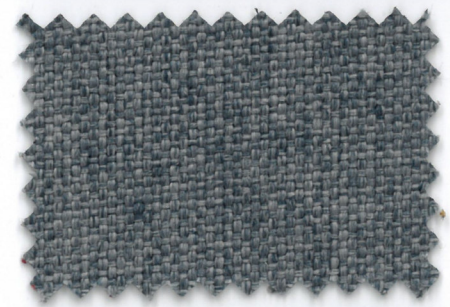
TAIPEI 7



TAIPEI 9



TAIPEI 12



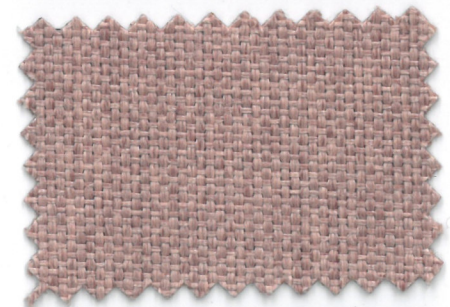
TAIPEI 15



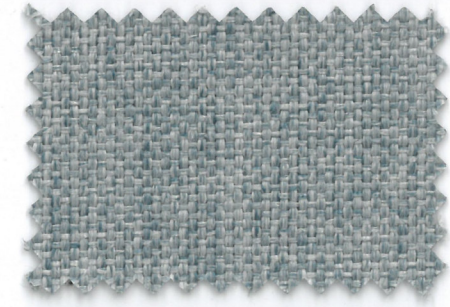
TAIPEI 18



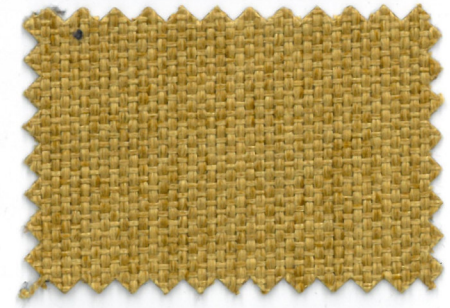
TAIPEI 10



TAIPEI 13



TAIPEI 16



TAIPEI 19



TAIPEI 11



TAIPEI 14



TAIPEI 17



TAIPEI 20